



FAQ WINDOWS 10 WINDOWS DEFENDER

Version of 7 October 2016

1 Introduction

Windows Defender helps protect your PC against malware (malicious software) like viruses, spyware, and other potentially unwanted software. Malware can infect your PC without your knowledge: it might install itself from an email message, when you connect to the Internet, or when you install certain apps using a USB flash drive, CD, DVD, or another removable media. Some malware can also be programmed to run at unexpected times, not only when it's installed.

Windows Defender is included with Windows and helps keep malware from infecting your PC in two ways:

- Providing real-time protection. Windows Defender notifies you when malware tries to install itself or run on your PC. It also notifies you when apps try to change important settings.
- Providing anytime scanning options. Windows Defender automatically scans your PC for installed malware on a regular basis, but you can also start a scan whenever you want. Windows Defender automatically removes (or temporarily quarantines) anything that's detected during a scan.

In Windows 10 you can [turn off Windows Defender real-time protection](#), but it will only be temporary. Windows will automatically turn real-time protection back on if it's off for a while.

This FAQ will show you how to completely turn off Windows Defender for all users in Win10.

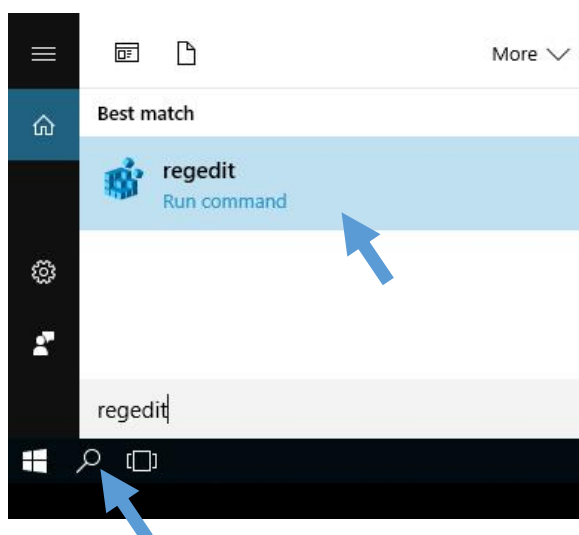
Please note:

- You should be signed in as **administrator** to be able to turn on or off Windows Defender.
- This guide is for advanced users so if necessary please ask assistance to people who understand the procedure to follow.

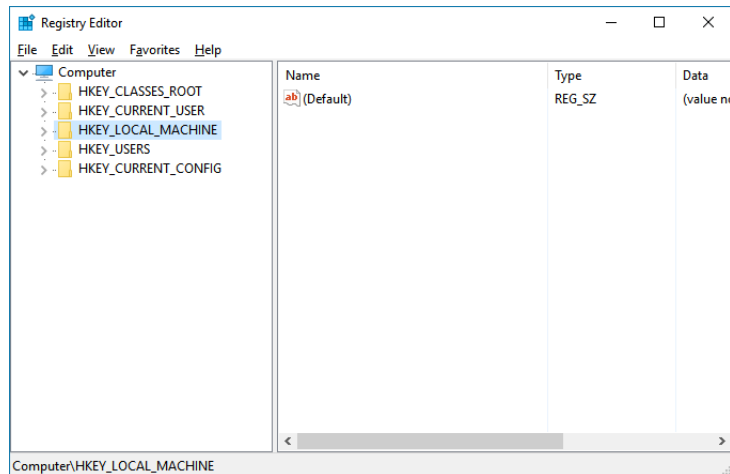
2 How to completely turn off Windows Defender for all users?

2.1 FIRST METHOD

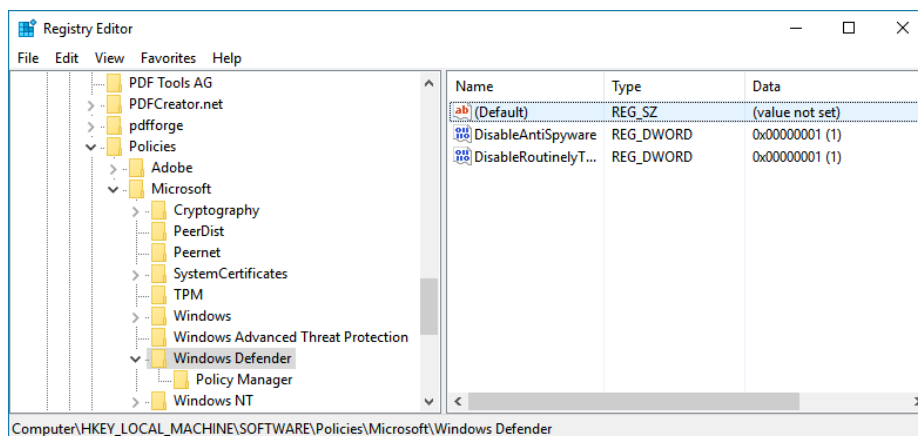
- 1 Select the magnifier glass and type: regedit → Open the regedit app



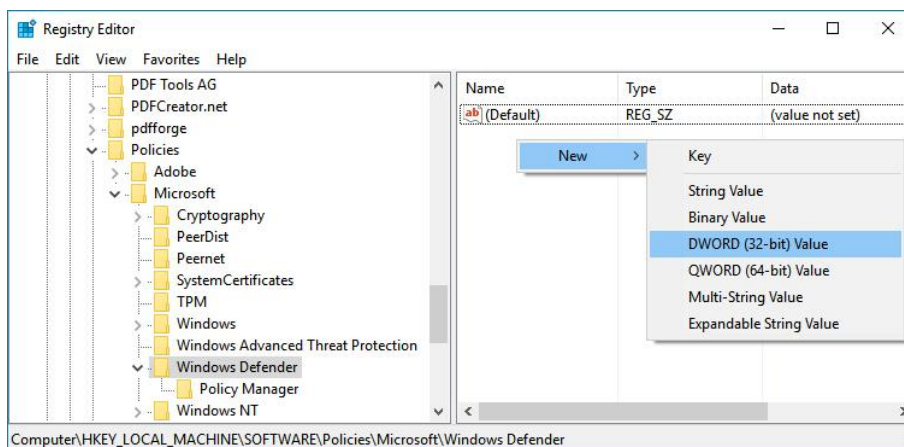
- The regedit editor will open

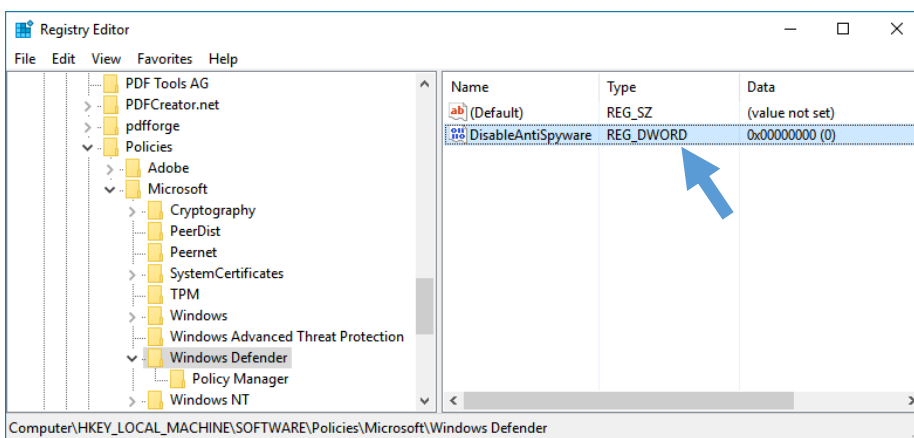
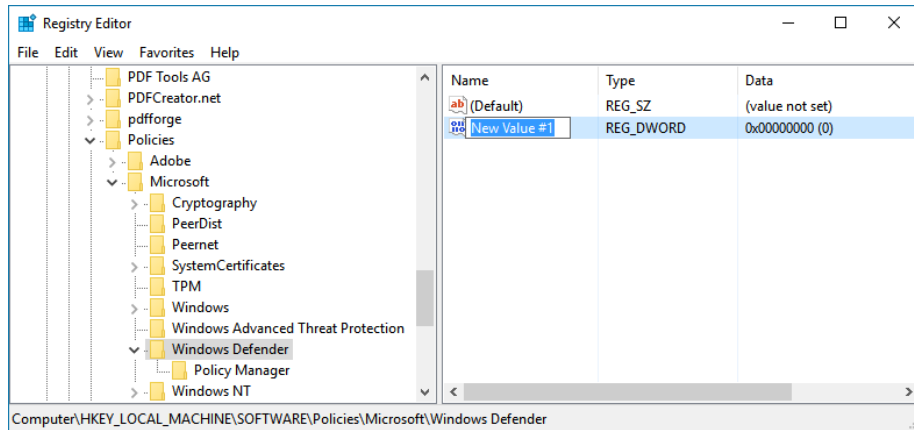


- Navigate to the following key:
HKEY_LOCAL_MACHINE\SOFTWARE\Policies\Microsoft\Windows Defender
- If you see the preference DisableAntiSpyware on the right double-click on it and set it to 1 to disable Windows Defender

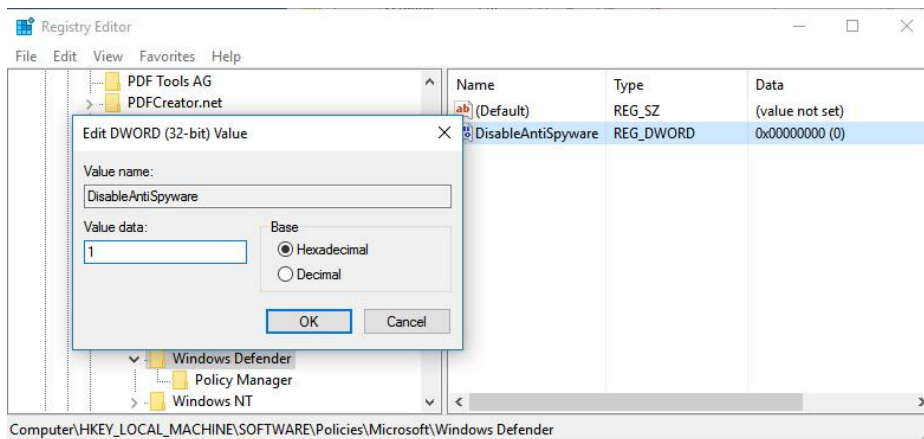


- If the preference does not exist, right-click on Windows Defender and select New > Dword (32-bit) Value and name it DisableAntiSpyware





- 6 Right click on the DisableAntiSpyware you just have created
 - 6.1. Set Value data on 1. Base should be Hexadecimal

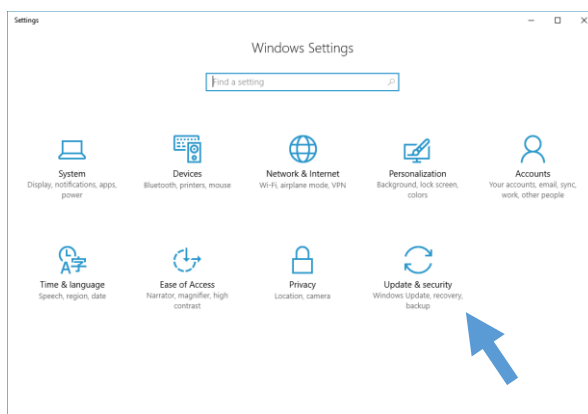


- 7 To restore Windows Defender at a later point in time, delete the key or set its value to 0
- 8 Restart your computer

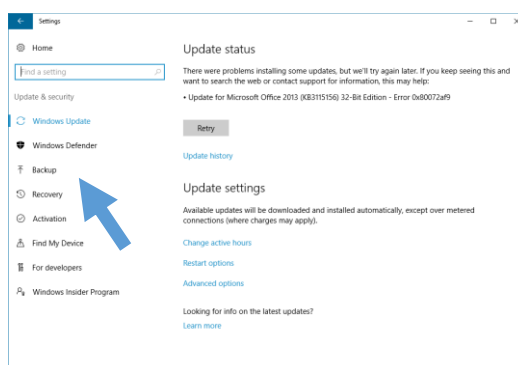
9 You can verify if the Windows Defender is switched off



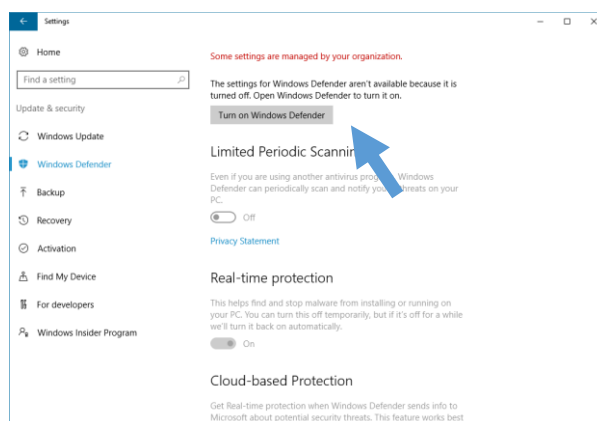
9.1. Click on Update & Security



9.2. Click on Windows Defender



9.3. Now you can see that the Windows Defender is switched off



2.2 SECOND METHOD

1. We procure you directly the DisableAntiSpyware.reg file
2. Download it and put it on your Desktop
3. Double-click on the file and it will automatically apply the needed changes into the register