



FAQ WINDOWS 10 ETHERNET POWER OPTIONS

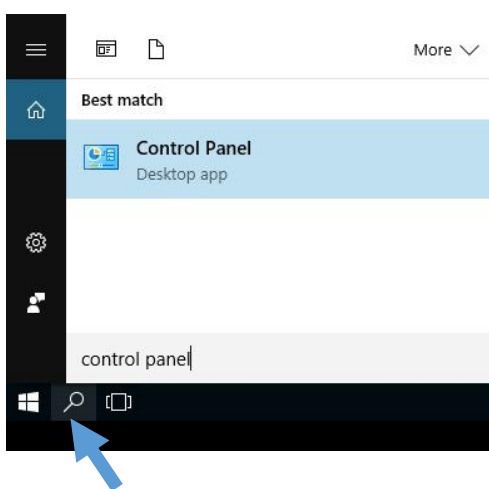
Version of 7 October 2016

1 Introduction

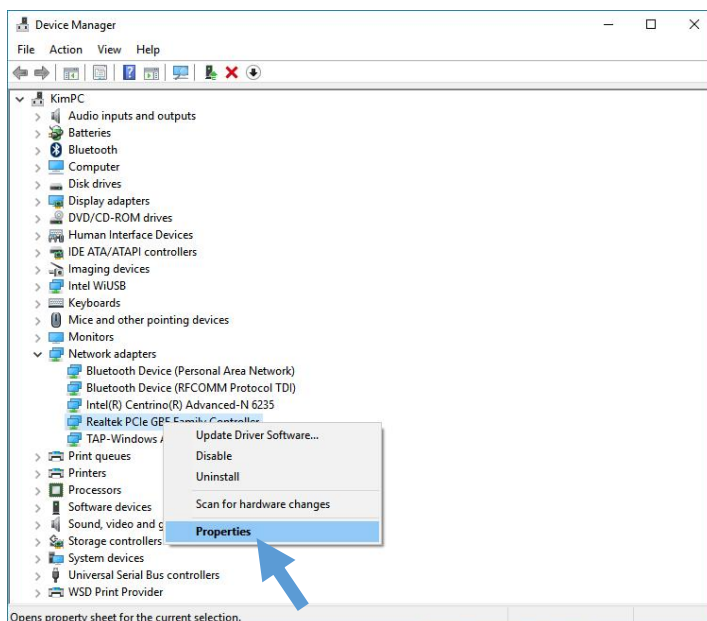
Windows 10 has an advanced feature which will switch of the Ethernet card on your computer when computer is idle for some time to save battery. If the Ethernet card would switch off you will lose the connection with your decoder(s) and other computer(s)/device(s) in the network.

2 How to prevent?

1. If applicable, close any Transponder Timing Software which is running on your computer
2. Open the Control Panel Application
 - 2.1. Press Window key, select the magnifier glass and type: Control Panel



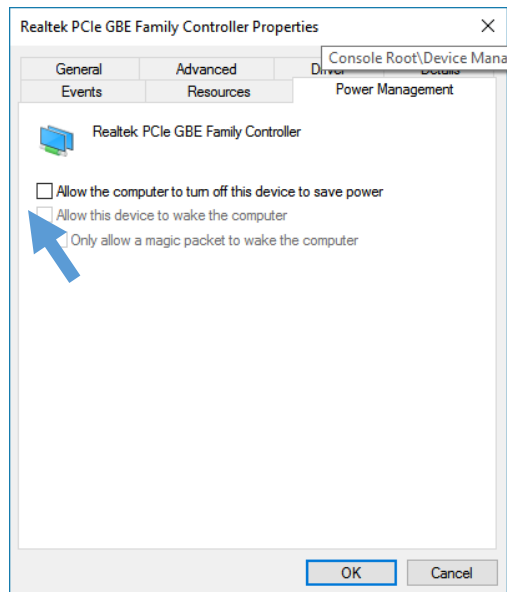
3. Open Device Manager
 - 3.1. Look for Network adaptors; in this example Realtek PCIe GBE Family Controller
 - 3.1.1. Could also be Intel® Ethernet Connection, Local Area Network and so on
 - 3.2. Right click and select Properties



3.3. Select Power Management tab

3.3.1. Uncheck: Allow the computer to turn off this device to save power

3.3.2. Click on OK and close any remaining open windows



4. Restart your Transponder Timing Software, you're done.

Important notice:

In case your computer has multiple Ethernet adaptors, you have to repeat this procedure for each Ethernet adaptor of this computer.

In case of multiple computers configuration, you have to perform this procedure on each single computer.